



**BURSA MALAYSIA SECURITIES BHD
(BMSB)**

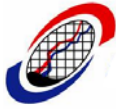
BURSA TRADE SECURITIES

**PARTICIPATING ORGANISATIONS'
TRADING MANUAL**

(EO/SMO/PO/002)

Last Update: 26 October 2009

This document is the intellectual property of BURSA MALAYSIA. No part of the document is to be reproduced or transmitted in any form or by any means, electronic or mechanical, including photocopying, recording or any information storage and retrieval system, without permission in writing from Head, Securities Market Operations, Exchanges Operations.



SIGN-OFF FORM

Title of Manual : Participating Organisations' Trading Manual
Reference No. : Version 2.0
Manual Owner : Securities Market Operations, Exchanges Operations

Signatory

Remarks

1. SIGN OFF BY HEAD OF DIVISION AND INTERESTED PARTIES

We hereby sign-off this manual for final quality assurance and endorsement by the Approving Authority.

.....
Name: Ponniah P. Ramiah
Designation: Head – Securities Market Operations
Business Unit: Exchanges Operations
Date: 26 October 2009

.....
Name: Patrick Kong Fuk Fu
Designation: Acting Head – Exchange Operations
Business Unit: Exchanges Operations
Date : 26 October 2009

.....
Name: Devanesan Evanson
Designation: Chief Market Operations Officer
Company: Bursa Malaysia Berhad
Date: 26 October 2009

2. SIGN OFF BY QA AUTHORITY

.....
Name:
Designation:
Division/Department:
Date :



DOCUMENT RELEASE NOTE

REVISION HISTORY

<i>Release No.</i>	<i>Revision Details</i>	<i>Date</i>
EO/SMO/PO/001	<i>Establish new policy and procedures</i>	<i>10 November 2008</i>
EO/SMO/PO/002	<i>Updates on:</i> <i>(i) On Market Married Transaction (OMMT)</i> <i>(ii) Tick Size</i> <i>(iii) Change of Trading Phases</i> <i>(iv) New Trading Halt Conditions & Period</i> <i>(v) Trade Cancellation Arising from Participant's Error</i>	<i>26 October 2009</i>

- 1. INTRODUCTION**

- 2. TRADING PHASES AND MARKET TIMING**
 - 2.1 General
 - 2.2 Market Segments
 - 2.3 Trading Phases and Market Timing
 - 2.4 Trading Phases of Securities Group
 - 2.5 Order
 - 2.6 Tick Size
 - 2.7 Trading at Last

- 3. MARKET OPENING**
 - 3.1 General
 - 3.2 Market Opening Process
 - 3.3 Theoretical Opening Price (TOP) Calculation
 - 3.4 4 Basic Rules In Calculating TOP

- 4. PRICE THRESHOLDS**
 - 4.1 Price Thresholds
 - 4.2 Reference Price

- 5. TRADING STATUS**
 - 5.1 General
 - 5.2 Interrupt/Halt Trading and Forbid Trading Status of a Securities Group
 - 5.3 Reserved or Suspended Trading Status of Securities
 - 5.4 Freezing of Price

- 6. BUYING-IN TRANSACTIONS**
 - 6.1 Buying-in Transactions
 - 6.2 Procedures to Request for Manual Buying-in/ Withdrawal of Manual Buying-in

7. SHORT SELLING

- 7.1 General
- 7.2 Regulated Short Selling
- 7.3 Proprietary Day Trading

8. CIRCUIT BREAKER

- 8.1 General
- 8.2 Business Rules 706.1 and 706.2
- 8.3 Bursa Malaysia Circuit Breaker Trigger Limits
- 8.4 Trading Halts Due to Circuit Breaker Triggered
- 8.5 Calculation of Circuit Breaker Trigger
- 8.6 Resumption on Trading

9. DIRECT BUSINESS TRANSACTIONS (DBT)

- 9.1 Direct Business Transaction
- 9.2 Business Continuity of DBT during Failover to DRC

10. ON MARKET MARRIED TRANSACTION (OMMT)

- 10.1 General
- 10.2 OMMT Features
- 10.3 OMMT Trade Information
- 10.4 OMMT Order Administrations

11. CONTINGENCY MEASURES

- 11.1 Order Cancellation
- 11.2 Trade Cancellation Arising from System Malfunction or Procedural Error
- 11.3 Trade Cancellation Arising from Mutual Cancellation
- 11.4 Trade Cancellation Arising from Participant's Error
- 11.5 Client Amendment

12. MARKET EMERGENCY

- 12.1 Trade Suspension

1.1 Scope of Coverage

- 1.1.1 This manual provides Participating Organisations (POs) with the following information relating to the operations of the Bursa Malaysia Securities Berhad (BMSB) and pertinent procedures on dealing with Bursa Malaysia.
- 1.1.2 The guidelines and procedures in this manual are intended for general usage. Where exceptions are to be made, POs should exercise discretion and good judgment accordingly. In case of doubt, POs should check with the Securities Market Operations (SMO) of the Market Operations of Bursa Malaysia Bhd.

1.2 Intended Audience

- 1.2.1 The primary audience of this manual is the POs of Bursa Malaysia who are involved in the related operational aspects of securities trading.

1.3 Ownership and Custody of Manual

- 1.3.1 The owner of this manual is BMSB. It shall be responsible for incorporating into this manual, any changes or amendments in line with policy and procedures changes and distributing the updates to the relevant parties.
- 1.3.2 No part of this manual is to be reproduced or transmitted in any form or by any means, electronic or mechanical, including photocopying, recording or any information storage and retrieval system, without the permission in writing from the BMSB.

1.4 Responsibility of the Recipient

- 1.4.1 Recipients of the copy of this manual shall have the responsibility for its safe custody and controlled disclosure to authorised staff only.

2.1 General

This chapter describes the market segments, trading phases, market timing, orders and freezing of securities' prices. All buy and sell orders will be keyed-in by the market participants via Automated Trading System (ATS) located at the Participating Organisations' (POs') premise as per the prescribed Trading Phases and Market Timing.

2.2 Market Segments

Trading of Securities is conducted in the following 4 market segments:

- **Normal Lot Market**
Refers to securities traded in Board Lot (100 unit per lot) size.

- **Odd Lot Market**
Refers to securities traded in a quantity of between 1 to 99 units.

- **Buying-in Normal Market**
Where a PO, having sold securities, fails by the Scheduled Delivery Time to make available in the relevant securities account, securities as tradeable balance Bursa Malaysia shall upon being advised by the Clearing House, automatically buy-in against the PO concerned without notice, on the settlement day.

- **Direct Business Transaction (DBT) Market**
Refers to any share transactions effected outside Bursa Malaysia, i.e. crossing (transaction between two POs), or married (transaction between two clients within the same PO).

2.3 Trading Phases and Market Timing

Each market segments will typically go through the following trading phases and market timing, and in the sequence as shown below:

Trading Phases	Market Timing			
	Normal Lot Market	Odd Lot Market	Buying-in Market	DBT Market
Pre-Opening (1 st session)	8:30am	8:30am	-	-
<i>*Opening/Continuous Trading</i> (1 st session)	9:00am	9:00am	**8:30am	8:30am
End of Session	12.30pm	12.30pm	12.30pm	-
Pre-Opening (2 nd session)	2:00pm	2:00pm	-	-
<i>*Opening/Continuous Trading</i> (2 nd session)	2:30pm	2:30pm	2:00pm	-
Pre-Closing (2 nd session)	4.45pm	4:45pm	-	-
<i>* Trading At Last</i> (2 nd session)	4:50pm	4:50pm	-	-
End of Trading Day	5:00pm	5:00pm	5:00pm	5:15pm
* Switch over to next phase is instantaneous upon completion of this phase				
** The latest time buying-in trades will be broadcasted				

2.4 Trading Phases of Securities Groups

The trading phases for all securities will be followed by Bursa Malaysia. However, Bursa Malaysia reserves the right to effect any changes at any time and POs will be informed accordingly either through POs’ Circular or through system broadcast messages.

“Pre-Closing” and “Closing” as appearing in the Business Rules of Bursa Malaysia Securities Bhd shall bear the same meaning as “Pre-Opening” and “Opening” respectively.

The Securities Group which is also known as sectors generally go through the following Trading Phases:

Trading Phases	Functions/Activities
Pre-Opening	<ul style="list-style-type: none"> • Orders can be entered, modified and deleted. • No matching of orders. • Theoretical Opening Price (TOP) of each securities is dynamically calculated. • Information is broadcasted to market based on orders in order book. • Market Orders and Limit Orders are allowed to be entered.
Opening	<ul style="list-style-type: none"> • Opening price is last TOP calculated before matching. • Opening price and quantity of contract matched are broadcasted. • Once Opening completed, system will automatically move to Continuous Trading. • If no matching can be done at opening, price of first trade occurring in main trading session is designated as the opening price. • No orders can be entered/modified/cancelled during Opening.

Trading Phases	Functions/Activities
Continuous Trading	<ul style="list-style-type: none"> • Orders can be entered, modified and deleted. • Trading takes place on a continuous basis. • Each incoming order is checked immediately for possible execution. • Unexecuted portion of such order is added to the order book. • Matched trades can be viewed via Automated Trading System (ATS). • Matching will be based on Price and Time Priority. • Market Orders and Limit Orders are allowed to be entered.
Pre Closing	<ul style="list-style-type: none"> • Starts immediately after end of continuous trading phase. • Order entry performed by participants is automatically updated in order book without giving rise to trades. • Theoretical Closing Price (TCP) is calculated each time a new order is entered into the order book. • Market Orders and Limit Orders are allowed to be entered.
Closing	<ul style="list-style-type: none"> • Closing price is defined in this phase. • In event of no trading quotation during Trading Day, the closing price is last known traded price.
Trading At Last	<ul style="list-style-type: none"> • Orders can be entered and matched at the last done price/ closing price only. • Only Limit Orders can be entered.
End of Session/ Trading Day	<ul style="list-style-type: none"> • Orders cannot be entered, modified, cancelled or matched.

2.5 Order

All orders entered into the ATS shall contain such particulars or information as may be prescribed by Bursa Malaysia. The quantity for a single order of securities entered through the ATS shall not exceed 5000 board lots for normal lots and 99 units for odd lots. This rule is also applicable to Buying-in transactions.

2.5.1 Order Types

The system supports only two (2) types of order, limit order and market order. The trading system uses the order types to prioritize transactions for matching. Market order has the highest priority in matching.

- **Limit Order**

A limit order is an order which has a price limit specified at the time of entry. A limit order is executed at the specified price or a better price. Buy limit orders can match at prices less than or equal to the limit price.

Sell limit orders can match at prices greater than or equal to the limit price. An incoming limit order can match with multiple orders in the book at prices up to the limit price specified.

Please refer to Appendix 1 for Examples on Limit Order Matching

- **Market Order (An order with no limit price)**

A Market Order is an order that shall be executed at the best available price/s, as quickly as possible. Only the order quantity needs to be specified when a Market Order is entered into the system. Unmatched quantity will remain in order book with highest priority status.

Market Orders are accepted during all trading phases except Trading At Last phase. A Market Order which was not fully executed upon completion of the Pre-Opening/ Pre-Closing phase will cause the securities to be reserved.

Market Order is not allowed during and after Curcuit Breaker Trading Halt.

Please refer to Appendix 2 for Examples on Market Order Matching

2.5.2 Order Characteristics - Session Order

All orders (normal and odd lots) shall be valid for one session only. Users have to manually carry forward the unmatched orders from the 1st session to the 2nd session if they want the orders to be valid for the 2nd session.

2.5.3 Modification and Cancellation of Orders

Any orders entered into the ATS may be modified or cancelled by the PO when unexecuted or unmatched, subject always to the rights of Bursa Malaysia not to allow for such modification or cancellation in circumstances it deems fit.

In modification, a PO is only permitted to reduce the quantity of an order entered before the order is matched. No order modification or order cancellation allowed during Opening/Closing phases.

2.6 Tick Size

A tick size is the permissible change on the offer to buy/sell price over the previous done or quoted price. When trading on Bursa Malaysia, buy/sell of shares within different price ranges follow different ticks.

The following are the tick sizes for the securities:

Price Range	Tick size (Sen)
Below RM1.00	0.5
RM1.00 to RM9.99	1.0
RM10.00 to – RM99.98	2.0
RM100.00 above	10.0

Market Price of ABFMY1 (RM)	Tick Size (Sen)
At any price	0.1

Market Price of Equity based ETF (RM)	Tick Size (Sen)
Less than 1.00	0.1
Between 1.00 to 2.995	0.5
3.00 and above	1.0

For bonds, debentures, loan securities, warrants and call warrants, the minimum bid structure will have the same minimum trading spreads as for shares.

2.7 Trading at Last

During Trading at Last, orders can be entered and matched at the last done price/pre-closing price (TOP) only. Market Orders are not allowed and only Limit Orders can be entered. When there is an order queuing in the order book during the Trading at Last which is better than the last done price/ TOP, the system will reject all other orders entered with inferior price.

Example:

- The last done price for counter ABC is RM0.700
- The best sell price is RM0.600 (carried forward from CTP / OCP) but no TOP calculated during pre-closing

During the trading at last phase, when a dealer enters a BUY order at a price higher than the best sell price (RM0.600) the order will be rejected with an error code “2138 Invalid order price”, whereas when the dealer enters a BUY order at the last done price (RM0.700), the order will be rejected with an error code “2137 Order price is outside the thresholds”.

When a dealer enters a SELL order at a price lower than the best sell price (RM0.600), the order will again be rejected with an error code “2138 Invalid order price” and when the dealer enters a SELL order at the last done price (RM0.700), the order will be rejected with an error code “2137 Order price is outside the thresholds”.

3.1 General

This chapter describes the market opening process for securities trading. This process includes determining the opening price and the matching and execution of buy and sell orders during opening. The same algorithm is used for all securities traded on the system.

POs are to take note that the Theoretical Closing Price (TCP) as appearing in the Rules of BMSB shall bear the same meaning as Theoretical Opening Price (TOP).

3.2 Market Opening Process

Each trading session will start with Pre-Opening phase. During the Pre-Opening phase, all orders can be entered and maintained by dealers, but no matching takes place. During this phase, a “**Theoretical Opening Price**” (TOP) for each securities is calculated by ATS and disseminated accordingly.

Dealers can continue to enter, modify and delete orders during Pre-Opening. Order entries, modification and deletion may change the TOP. When this occurs, the system will determine the new opening price and display it to the market.

Upon completion of the Pre-Opening period, the market will automatically open for trading and proceed to Continuous trading. During the opening, orders are matched and executed at the TOP; order modification or cancellation is not allowed. Upon entering continuous trading phase, the remaining orders will be carried forward to continuous phase.

3.3 Theoretical Opening Price (TOP) Calculation

3.3.1 The Theoretical Opening Price (**TOP**) is calculated realtime in pre-opening phase, with the following occurings:

- The following order types are taken into consideration, i.e.
 - Limit orders
 - Market orders

- The total quantity is taken into account;

- Each time an order is entered, modified or deleted, the processing of TOP calculation is triggered;

- The order price must range between and include the lower and upper of the Price Thresholds (as per chapter 4.1), otherwise the order is rejected.

3.3.2 The TOP might be higher or lower than the price threshold of a securities due to the behaviour of the system which calculates the TOP solely based on the above criterias. This could lead to the securities being '**reserved**' by the system. Please refer to Chapter 5.3.1 for example.

3.4 4 Basic Rules In Calculating TOP:

R1 : Maximization of matching quantity at the selected price.

R2 : Minimization of non-matching quantity.

R3 (i) : When several prices are used to respect R1 & R2, and imbalance of unfilled quantity is on the buy side, then the TOP used is the highest price.

R3 (ii) : When several prices are used to respect R1 & R2 , and imbalance of unfilled quantity is on the sell side, then the TOP used is the lowest price.

R4 : Closest price to the Reference Price i.e. the settlement price.

Please refer to Appendix 3 for examples on calculation of TOP.

4.1 Price Thresholds

Bursa Malaysia shall enforce Price Thresholds for all securities traded on the BMSB. Accordingly, Bursa Malaysia may stipulate the maximum price ('upper limit') and the minimum price ('lower limit') at which an order in respect of a securities may be entered.

The upper and lower price limit set for securities traded on BMSB are as below:

4.1.1 30% threshold rule

If the reference price is above RM1, then a threshold of 30% is defined as higher and lower threshold. These thresholds are also valid at least for one session only.

For upper limit, Bursa Malaysia will be adjusted downward to the nearest bid while lower limit will be adjusted upward to the nearest bid.

4.1.2 RM 0.30 threshold rule

If the reference price is below RM1, then a threshold of absolute RM0.30 is defined as higher and lower threshold. These thresholds are also valid at least for one session only.

4.1.3 IPO threshold rule

<u>Price Range</u>	<u>Lowest Threshold</u>	<u>Highest Threshold</u>
RM1.00 and Above	30%	400% (5 times)
30.5 sen to 99.5 sen	30 sen	400% (5 times)
15 sen to 30 sen	Fixed at 0.5 sen	400% (5 times)
0.5 sen ≤ 14.5 sen	Fixed at 0.5 sen	30 sen

**These thresholds are valid for the first day of listing.*

No orders shall be entered above the upper limit or below the lower limit defined by Bursa Malaysia during the trading day.

Bursa Malaysia may from time to time change the upper limit and/or the lower limit of the counter at its discretion.

4.2 **Reference Price**

Reference Price means:

- 4.2.1 the previous trading session's Last Done Price; or
- 4.2.2 if for two (2) consecutive trading sessions of one (1) market day no trading has been done for a particular securities:
 - (i) the limit buy price at market close, if it is greater than the last Reference Price;
 - (ii) the limit sell price market close, if it is less than the last Reference Price;or
- 4.2.3 for ex-entitlement securities, as shall be determined by Bursa Malaysia.
- 4.2.4 for securities which has been approved by Bursa Malaysia for listing, on the first day of their listing the issue or offer price of such securities; or
- 4.2.5 in any other circumstances, as determined by Bursa Malaysia.

5.1 General

The Trading Status of a securities group shall be specified by Bursa Malaysia in any one of the following manner:

- **Authorise**

When a Securities Group is specified as '**authorised**', orders in relation to the Securities Group may be entered, modified, cancelled and matched.

- **Interrupt (Circuit Breaker)**

When a Securities Group is specified as '**interrupted**', orders in relation to the Securities Group may be entered, modified and cancelled but shall not be matched.

- **Forbid**

When a Securities Group is specified as '**forbidden**', orders in relation to the Securities Group shall not be entered, modified, cancelled or matched.

In addition to the above, the Trading Status of securities are specified by Bursa Malaysia in any one of the following manner:

- **Open**

When the securities is specified as '**open**', orders in respect of the securities may be entered, modified, cancelled and matched.

- **Reserve**

When the securities is specified as '**reserved**', orders in respect of the securities may be entered, modified and cancelled. However, order execution will be denied (as when the instrument is in the Pre-Opening phase).

- **Halt (Suspended)/ Frozen**

When the securities is specified as '**suspended**', orders in respect of the securities can be entered, modified or cancelled. However no matching will take place.

5.2 Interrupt/Halt and Forbidden Trading Status of a Securities Group

5.2.1 The trading status of a Securities Group is considered '**interrupted**' when the circuit breaker:

- is triggered at the first level (more than 10 % but less than 15%) or
- is triggered at the second level (more than 15% but less than 20%)

During this state all trading ceases immediately for a securities group. Dealers are allowed to perform order entries, modification and cancellation of Limit Orders. As for Market Orders, orders can only be modified and cancelled, no new order entries are allowed. For both types of orders, no matching will take place during this phase.

5.2.2 '**Forbidden**' is a more restrictive intervention that may be carried out by Bursa Malaysia. When a securities group is in a forbidden state, orders cannot be entered, modified, cancelled and matched.

A securities group may be '**forbidden**' when the circuit breaker for the securities market is triggered at the third level (equal or more than 20%).

5.3 Reserved or Suspended Trading Status of Securities

Securities can also be in a state of '**Open**', '**Reserve**' or '**Halt**'. This describes the *current (temporary) state* of the securities. For example, corporate announcements or the price of incoming orders can trigger these states.

5.3.1 Reserved

- The Trading Status for securities is automatically changed to '**reserved**' by the system when:
 - Opening price of the securities is outside threshold
 - Market Order for the securities is not fully executed
 - Only one Market Order in the order book for the securities

- When a securities is ‘reserve’ due to the market orders as above, POs have 3 minutes to withdraw their orders upon commencement of Opening/Closing phase. After 3 minutes, Market Operations will ‘open’ the securities for trading.
- In opening a securities under ‘**reserved**’ status, Market Operations will at times be required to change the Upper or Lower Price Limit of the securities up to 2 bids. This can happen when there is a limit order entered by POs at either the upper or the lower price limits with a Market Order.

E.g. A securities with Reference Price of RM 1.00

B/Qty	Buy	Sell	S/Qty
700	MO	MO	300
100	1.30	1.30	200
		1.29	100

In the above scenario, the system will try to calculate TOP which is higher than the best buy price which will be RM 1.31. As the initial upper limit is RM 1.30 (based on 30% price threshold), the counter will be reserved by the system. Market Operations will change the upper limit to RM 1.32 before the counter is opened.

- A reserved securities does not go into the Opening phase/Closing phase but behaves as if it is in the Pre-Opening phase/Pre-Closing phase, where dealers are able to enter, modify, or cancel orders for the securities (but no matching will take place).

Market Operations may use its discretion to schedule a deferred opening for the securities, or open the securities immediately, or leave it in the reserved state.

5.3.2 Halt (Suspend) / Forbid

Chapter 16 of the Listing Requirements (LR) states that the Exchange may at any time suspend the trading of listed securities under certain circumstances (please refer to the LR for the circumstances).

The following is a clarification on how trading halts will be implemented and what trading activities will be allowed during the trading halts for Normal and Odd Lot Markets:

- Where the material announcement is released during trading hours, the trading halt imposed will be for 1 hour or until the end of that trading session, whichever is earlier.
- Where the material announcement is released before the commencement of trading at 9:00 am, a trading halt will be imposed for 1 hour from 9:00 am. Order entry and modification will be allowed during this time and Theoretical Opening Price (TOP) will be calculated, but no matching of trades will take place.
- Where the material announcement is released between 9:00 am and 11:00 am, a trading halt will be imposed for 1 hour from the time the material announcement is made. Order entry and modification will be allowed during this time and TOP will be calculated, but no matching of trades will take place.
- Where the material announcement is released after 11:00 am, then the trading halt will be until the end of the trading session at 12:30 pm. Similarly, where the material announcement is released after 3:30 pm, the trading halt will be until the end of the trading session at 5:00 pm. Order entry and modification is NOT allowed during this time, and TOP will NOT be calculated.

- Where the material announcement is released between 1:30 pm to 2:30 pm, the trading halt imposed will be for 1 hour from 2:30 pm. Order entry and modification will be allowed during this time and TOP will be calculated, but no matching of trades will take place.
- Where the material announcement is released between 2:30 pm and 3:30 pm, a trading halt will be imposed for 1 hour from the time the material announcement is made. Order entry and modification will be allowed during this time and TOP will be calculated, but no matching of trades will take place.
- A trading halt will not be imposed where the material announcement is released during the window period from 12:30 pm to 1:30 pm.

For DBTs, the principle is that DBTs can only be effected after 1 hour of trading under the Continuous Trading Phase (CTP), Trading at Last (TAL) and Pre-Closing phase (POC). The rationale for the 1 hour is for the determination of the VWAP for the DBT.

Please refer to Appendix 4a for a tabulated description of Securities and Securities Group Trading Status and Appendix 4b for a summary of when trading halts will happen and impact of the trading halts for Normal market, Odd lot market and Direct Business Transactions.

5.4 Freezing of Price

Where an Upper Limit Price or Lower Limit Price as the case may be is reached in a trading session of a market day and is followed by another Upper Limit Price or Lower Limit Price in the next trading session on the same market day or the next market day as the case may be, the Exchange shall maintain the trading price for the following trading session or sessions at the Last Done Price of the previous trading session for such period as specified by the Exchange.

6.1 Buying-In Transactions

6.1.1 Buying-in is the process of buying shares by Bursa Malaysia for settlement for failed trades on behalf of defaulters. Bursa Malaysia shall institute buying-in against the relevant selling POs on the settlement day of the contract, in event that the selling clients' CDS accounts do not have sufficient securities for settlement on due date.

6.1.2 In BTS, buying-in is only applicable for failed board lot transactions; there is no buying-in for odd lots.

6.1.3 POs may also request for a manual buying-in to be undertaken by Bursa Malaysia when there is:

- failure in delivery of securities from direct business transactions i.e. married or crossing,
- failure by the seller in returning the entitlements arising from Rights and Bonus, to be passed to the purchaser.
- Any other reasons as approved by the Head, Securities Market Operations.

6.1.4 The bidding price for buying-in of any securities by the Exchange shall be ten (10) ticks above:

- the Closing Price on the previous market day ; or
- the Last Done Price for the previous trading session;
- the last 'cum' price in respect of buying-in for 'cum' contract on or after the Ex-date up to the close of business on the lodgement date;

of such securities, whichever is higher.

The buying-in price will be based on a different tick structure and tick sizes to ensure that the buying-in price is attractive to potential sellers.

6.1.5 Below are the tick sizes for the securities, where buying-in prices shall be based on:

Market Price of Securities (incl. ABFMY1 and Equity based ETF (RM))	Tick Size (Sen)
Less than 1.00	0.5
1.00 to 2.99	1
3.00 to 4.98	2
5.00 to 9.95	5
10.00 to 24.90	10
25.00 to 99.75	25
100.00 and above	50

In computing the buying-in price, the buying-in price will be rounded up to the next tick size if the closing price falls between two tick sizes. For example if the closing price is between RM10.02 and RM10.08, the buying in price will be rounded up to RM11.10 as illustrated below:

Computation of Buying-In Price

Closing price (Based on current tick size)	Buying-in Computation (Based on the old tick size)	Buying in price
RM 10.00	10.00+1.00 (10x0.10=1.00) =RM 11.00	RM11.00
RM10.02	10.02+1.00 (10x0.10=1.00) =RM11.02	RM11.10 (rounded up to RM11.10)
RM 10.04	10.04+1.00 (10x0.10=1.00) =RM 11.04	RM11.10 (rounded up to RM11.10)
RM 10.06	10.06+1.00 (10x0.10=1.00) =RM 11.06	RM11.10 (rounded up to RM11.10)
RM 10.08	10.08+1.00 (10x0.10=1.00) =RM 11.08	RM11.10 (rounded up to RM11.10)
RM 10.10	10.10+1.00 (10x0.10=1.00) =RM 11.10	RM11.10

- 6.1.6 In the case of ETFs, currently the buying-in price is based on (10) ticks of the tick sizes of the ETF. As the tick size is small, in the event of failed trade the buying in price is not attractive for potential sellers to sell.

For example in the case of ABFMY1 the minimum tick size is 0.1sen. Applying 10 ticks to the minimum tick size (0.1x10) would be 1sen. This would not be enough to cover the transaction cost of the potential seller.

For the purpose of buying-in of ETFs, the same buying-in structure for stocks to be applied for ETFs as follows:

For example in the case of FB30ETF if its traded in the range of RM5.77, the buying-in tick will be under the range of RM5.00 to RM9.95 which is 0.05. Therefore the buying-in price premium will be (10 ticks X 5sen) 50sen.

- 6.1.7 If the securities are not obtained on the first day, the buying-in shall continue on the second and each succeeding business day and the bid price shall be raised by five (5) ticks until the securities are bought.
- 6.1.8 Bursa may suspend the daily increase in the bidding price or revise the bid so that the bidding price shall not be more than 25% above the last recorded sales or the last buying price bid of the previous market day, whichever is higher.

6.2 Procedures to Request for Manual Buying-in/ Withdrawal of Manual Buying-in

POs must provide Market Operations with the latest list of its personnel who are authorised to request the manual buying-in/ withdrawal of manual buying-in request.

All requests for manual buying-in should be made using the *Request To Buying-In Under Manual* form (Appendix 5). Requests for withdrawal of buying-in should be made using the *Request for Withdrawal of Buying-In* form (Appendix 6).

Responsibility	Action
POs	<ol style="list-style-type: none"> 1. Send duly authorised Manual Buying-In/Withdrawal of Manual Buying-In request forms by fax. 2. The authorised signatory to contact SMO via phone to confirm the request has been received by SMO.
SMO personnel	<ol style="list-style-type: none"> 3. When POs call, verify the particulars in the request form such as securities, quantity and the CDS account number. 4. Update system with Buying-in particulars.

7.1 General

A short sell order is a Sell order entered by a dealer for a client who does not own the security at the time of the execution of the sale. Generally he has borrowed it from a lender in anticipation of making a profit by paying for it after its price has fallen.

7.2 Regulated Short Selling

7.2.1 Regulated Short Selling (RSS) means a class of securities approved by Bursa Malaysia the selling of approved securities where the seller does not own such securities but has, prior to the execution of the sale, borrowed the approved securities or obtained confirmation from an Authorised Participant that the Authorised Participant has the approved securities available to lend.

7.2.2 RSS securities are securities which are eligible for RSS, i.e. for which RSS orders are allowed. These securities will be displayed on the ATS as '✓' (short selling allowed) and '✗' (short selling suspended).

7.2.3 RSS trades are different from normal trades, thus normal trading accounts cannot be used to enter RSS orders. Trade amendment from a normal trading account to an RSS accounts is also prohibited.

7.2.4 POs must open and use a different trading account (i.e. RSS trading accounts) to enter RSS orders into the ATS and the RSS trading accounts can only be used to enter RSS orders. The RSS trading accounts also cannot be used for Direct Business Transaction (DBT) orders and Odd Lot orders.

7.2.5 RSS orders are entered via the RSS Order screen of the ATS, and can only be entered at a price greater than the Reference Price ("RP") or Last Traded Price ("LTP") – up tick rule. The ATS will reject RSS orders with short sell price lower or equal to the reference price or the last traded price.

7.2.6 At start of each trading day, RP is used and continues to be used during the day, if there are no trades prior to the RSS order. Where there are trades in the morning session, then LTP is used for the rest of the trading day.

7.2.7 RSS Trade Limit

Currently the Trade Limit for RSS has been set to be 10% of the outstanding shares of the issue on the market day of the total gross volume of RSS against the number of issued shares of a particular RSS securities.

Once the RSS trade limit is reached Bursa Malaysia will commence suspension RSS trading for the particular securities. When this happens, RSS orders will not be allowed to be entered for the securities. All existing RSS orders in the ATS would also be cancelled.

Uplift shall be four (4) market days from the day of RSS suspension.

7.3 Proprietary Day Trading (PDT)

7.3.1 Proprietary Day Trading (PDT) is a facility that provides licensed dealer's representatives to be designated as "PDT dealers". These day traders (Designated dealers) will be allowed to enter short selling orders called PDT orders on securities eligible for PDT.

7.3.2 A PDT securities is a securities which is eligible for PDT, i.e. for which PDT orders are allowed.

7.3.3 PDT orders are different from RSS order and normal sell orders, thus normal or RSS trading accounts cannot be used to enter PDT orders. POs must create and use a different trading account (i.e. PDT trading accounts) to enter PDT orders into the ATS.

7.3.4 The PDT trading accounts can only be used to enter PDT orders. The PDT trading accounts cannot be used to enter RSS, normal sell orders or Direct Business Transaction (DBT) sell orders.

7.3.5 A trading suspension on the RSS Securities will also suspend the PDT securities, thus subsequently suspending the PDT orders.

7.3.6 Unlike RSS trades, there is no uptick rule requirement for PDT, trades can be conducted at any price.

7.3.7 PDT Trade Limit

Currently there is no Trade Limit set for PDT.

8.1. General

A Circuit Breaker is a mechanism implemented to moderate excessive volatility in the stock market of the Bursa Malaysia Securities Bhd.

A Circuit Breaker is a market-wide approach to managing downward movement of the barometer index. It does this by temporarily halting trading in the entire market during normal trading hours. Announcement on the trading halt will be immediately disseminated to the public.

When the Circuit Breaker is triggered, it is intended that investors should continue to keep themselves updated and informed by continuing to access all possible sources of information available. In this manner, investors will be able to assess and review prevailing conditions based more on information and less on market trends and speculation, in order to make well-considered investment decisions upon resumption of trading.

The Circuit Breaker mechanism as implemented at Bursa Malaysia Securities Bhd is only for monitoring downward movement (not upward) of the FBMKLCI (or .

8.2 Business Rule 706.1 and 706.2

Trading of any Contract on the Market shall be halted or suspended whenever Bursa Malaysia deems such action appropriate in the interest of maintaining a fair and orderly market to protect investors. Among the factors that may be considered by Bursa Malaysia are that:

- (a) trading in the securities has been halted or suspended;
- (b) the opening of trading in the securities has been delayed because of unusual circumstances; or
- (c) Bursa Malaysia has been advised that the issuer of the securities is about to make an important announcement affecting such issuer.

8.3 Bursa Malaysia Circuit Breaker Trigger Limits

Bursa Malaysia Circuit Breaker Trigger Levels/ Conditions And Trading Halt Duration					
Trigger Level	FBMKLCI Decline	From 9:00 am– before 11:15 am	From 11:15 am to 12:30 pm	From 2:30 pm – before 3:45 pm	From 3:45 pm to 5:00 pm
1	FBMKLCI falls by an aggregate of 10% or more but less than 15% of the previous market day's closing index.	1 Hour	Rest of Trading Session	1 Hour	Rest of Trading Session
2	FBMKLCI falls by an aggregate of or to more than 15% but less than 20% of the previous market day's closing index.	1 Hour	Rest of Trading Session	1 Hour	Rest of Trading Session
3	FBMKLCI falls by an aggregate of or to more than 20% of the previous market day's closing index.	9.00 a.m. - 12.30 p.m.		2.30 p.m. - 5.00 p.m.	
		Rest of Trading Day		Rest of Trading Day	

A fall in the FBMKLCI may or may not be in a sequential manner i.e. down to 1st level, then 2nd level and finally 3rd level. Sometimes the fall may be abrupt and steep right up to the 3rd level.

In the event that the circuit breaker hits the 3rd level, Bursa Malaysia has the discretion to either halt or forbid trading of the securities group.

A trading halt at any of the 3 trigger levels will occur only once during the trading day in Bursa Malaysia Securities market.

8.4. Trading Halts Due to Circuit Breaker Triggered

8.4.1 **Level 1:** If the FBMKLCI at any time during a trading session (as prescribed in Chapter 5 of the Rules of BMSB) reaches Circuit Breaker Level 1 below its closing value on the previous trading day, trading in securities shall immediately halt on the stock market of Bursa Malaysia and shall not resume for a continuous period of not less than one (1) hour or until the close of the trading session, whichever is the earlier.

- 8.4.2 **Level 2:** If the FBMKLCI at any time during a trading session reaches Circuit Breaker Level 2 below its closing value on the previous trading day, trading in securities shall immediately halt on the stock market of Bursa Malaysia and shall not resume for a continuous period of not less than one (1) hour or until the close of the trading session, whichever is the earlier.
- 8.4.3 **Level 3:** If the FBMKLCI at any time during a trading session reaches Circuit Breaker Level 3 below its closing value on the previous trading day, trading in securities shall immediately halt on the stock market of Bursa Malaysia and shall not resume for the remainder of the market day.
- 8.4.4 Without derogation to any of the foregoing provisions, in the event a halt in trading in respect of Circuit Breaker Level 1 and/or Circuit Breaker Level 2 is effected when there is equal or less than one (1) hour and fifteen (15) minutes to the end of the trading session, trading in securities on the stock market of Bursa Malaysia shall halt for the remainder of the trading session and resume at the start of the following trading session.

8.5 Calculation Of Circuit Breaker Trigger

- 8.5.1 The Circuit Breaker Levels will be calculated by Bursa Malaysia before the beginning of each market day using the prescribed percentages based on the closing value of the FBMKLCI of the previous market day.
- 8.5.2 Each percentage calculation will be rounded to the nearest integer to create the Circuit Breaker Levels' trigger points and will remain in effect until the next calculation.
- 8.5.3 These directives shall apply whenever the FBMKLCI reaches the Circuit Breaker Levels' values calculated in accordance with these directives as may be implemented by Bursa Malaysia notwithstanding the fact that there may be orders being entered into ATS contemporaneously with the calculation of the FBMKLCI, which orders may, if taken into account, impact the FBMKLCI.

8.5.4 These directives shall apply whenever the FBMKLCI reaches the Circuit Breaker Levels' values calculated herein notwithstanding the fact that, at any given time, the calculation of the Circuit Breaker Levels' values may be based on the prices of less than all of the stocks included in the FBMKLCI.

8.6 Resumption on Trading

The resumption in trading following a halt under BMSB Rules shall be conducted in accordance with such procedures and processes as may be determined by Bursa Malaysia to be necessary or expedient by way of any circulars, directives or guidelines issued by Bursa Malaysia from time to time.

9.1 Direct Business Transaction

9.1.1 Direct Business Transaction (DBT) encompasses any shares transacted outside Bursa Malaysia's on market trading system and includes:-

- crossing; transaction between two stockbroking companies,
- married; transaction between two clients within a stockbroking company.

9.1.2 The transaction price for DBT is performed based on the Previous Volume Weighted Average Price (PVWAP) of the securities. The ATS will allow POs to enter DBT trades at any price, subject to a maximum of 99% of the selected Volume Weighted Average Price (VWAP). The entry of the DBT into the system is subject to the Rules of the Exchange on DBT.

9.1.3 The PVWAP of securities will not be available on WinSCORE/ WinSTOCK for BTS as it will not be stored and disseminated by the system. Thus, Bursa will post the PVWAP on Bursa Website and e-Rapid on a daily basis for POs' reference.

9.1.4 For securities which fall under the following categories, DBT cannot be performed for the first one (1) hour of the trading session:

1. Securities under New listing
2. Securities under Corporate exercise
3. Securities Re-quoted from Suspension

9.1.5 Upon one hour of the Opening phase, POs can perform the DBT using the VWAP of the first hour of trading which can be obtained online via WinSCORE. This price shall be applicable for the whole day. However, if there is no VWAP available (due to no trades), the securities' reference price for the particular session shall be used as the basis for DBT.

- 9.1.6 Bursa will inform POs via Special Announcement on the securities that fall under the above categories to ensure POs are aware of what price to refer to for their DBT.
- 9.1.7 System will allow POs to key-in themselves DBT orders at any price not more or less than 99% of the current VWAP of the securities.
- 9.1.8 For DBT of a quantity of less than 50,000 units and at a price which is 15% higher or lower than the effective price (PVWAP, VWAP or Reference price depending on the situation), POs must obtain approval from Bursa Regulation three (3) days prior to the said transaction. For DBT of a quantity of more than 50,000 units and at a price which is 15% higher or lower than the effective price, POs must report the said transaction to Bursa Regulation the latest by 12.30 pm of the following trading day. All DBTs within the 15% of the PVWAP need not be reported to Bursa.
- 9.1.9 POs must note that all corresponding DBT trades must be keyed into the ATS within 15 minutes of the first counterparty's input. Failing which, the said declaration will be eliminated by the system and needs to be re-keyed into the ATS. The 15 minutes time frame is prescribed by Bursa and POs will be informed of any changes to the time accordingly.
- 9.1.10 If a DBT cannot be entered by a PO via their ATS for some reason, the said PO can submit a request to the Head, Securities Market Operations (SMO), to key-in the DBT on their behalf.
- 9.1.11 All requests must be made using *Request for Direct Business Transaction (DBT)* form. The authorised signatory must fax the form and confirm with SMO the latest by 4.30 pm on the said trading day. *Refer to Appendix 7 – Request for Direct Business Transaction form.*

9.1.12 Client amendments cannot be performed for DBT in BTS. To perform amendment on a DBT trade, the respective PO(s) must cancel the trade and replace the said trade with a new trade. Both parties involved in the DBT must cancel the trade together and replace it with a new one accordingly. POs to note that the trades are allowed to be cancelled for “client amendment purpose” only and all cancelled trades **MUST** be replaced with a new trade. A pure trade cancellation is not allowed.

9.2 Business Continuity of DBT during Failover to DRC

9.2.1 The system will not be able to recover DBT trades that were performed before a disaster by POs.

9.2.2 In this instance, POs must inform Bursa of all DBT trades performed before the disaster to be re-keyed into the system by SMO’s personnel.

9.2.3 The same *Request for Direct Business Transaction (DBT)* form must be used and submitted to Bursa immediately once Bursa declares a disaster and move over to the BCP site. The authorised signatory must fax the form and confirm with SMO immediately to be keyed into the system on the same day.

10.1 DEFINITION

On-Market Married Transaction (OMMT) is a trade transaction whereby a PO can key-in a buy and sell order to match directly on-market without going through the order book under the following conditions:

- OMMT is available for "married" transactions i.e. matching of trades between the same PO's buying and selling clients and not for "crossings" i.e. matching between 2 different POs;
- The PO can act on behalf of a client on one side of the trade and as principal (i.e. trading for themselves) on the other;
- The transaction has to be within the same branch of the PO;
- The bid and ask orders must be of the same price and same quantity;
- The buy and sell order price must be **at** or **within** the best buy and best sell limit prices.

10.2 OMMT Features

10.2.1 OMMT orders are only to be allowed during Continuous and Trading At Last phases only.

10.2.2 During Continuous Trading phase, only limit order types are allowed. Order price must be at or within the best buy and best sell limit prices.

10.2.3 During Trading at Last (TAL), OMMT trades can only to be done at last done prices. The TAL rules as per Chapter 2.7 of this document shall also apply here.

-
- 10.2.4 OMMT is provided for normal market only and is not available for odd lot and buying-in markets.
- 10.2.5 OMMT executed trades will impact the Last Done prices of the normal market.
- 10.2.6 If there is no buy order, the lower limit is the lower threshold and if there is no sell order, the upper limit is the upper threshold.
- 10.2.7 No Regulated Short Selling (RSS) and Proprietary Day Trading (PDT) are allowed.
- 10.2.8 Total quantity of single order OMMT must range between the minimum quantity and the maximum quantity defined by the system (e.g. minimum of 1 lot maximum of 5000 lots per order entry). The default board lot is 1 board lot i.e. 100 shares.
- 10.2.9 The OMMT transactions between different buyer and seller client account from different dealer/remisiers can only be accepted if both dealer/remisiers are associated. For example, a dealer of a PO is able to key in for another dealer's clients of the same PO only if they have already been associated by the PO's Administrator.

10.3 OMMT Trade Information

- 10.3.1 The current ATS is able to provide the POs with an option:
- Buy
 - Sell
 - OMMT
- 10.3.2 For each stock, the ATS can display separate columns for the following information on real time basis:

- Total quantity of normal and OMMT
- OMMT volume

10.3.3 OMMT trades appear in different colors to distinguish OMMT from normal trades in the stock tracker.

10.3.4 Once an OMMT is effected, the quantity of the OMMT will be included in the scoreboard Normal volume column.

10.3.5 OMMT transaction will impact the Last Done Prices of the Normal Market.

10.3.6 The OMMT trades will not be included in the calculation of VWAP in WinSCORE as they are pre-arranged trades which are not considered as on-market transactions. Also VWAP is used as reference for DBT and therefore, the VWAP should reflect the true market sentiment.

10.4 OMMT Order Administration

10.4.1 PO is authorized to allow selected dealers/remisiers to have access for OMMT order entry function.

10.4.2 There is also an option for PO's User Administrator to allow OMMT for DMA, internet trading and Algo Trading.

10.4.3 The rule for the client amendment would be the same rule as that for the normal buy and sell transaction. The OMMT trades can subsequently be amended individually to a different client account.

10.4.4 The credit limit check and earmark on the OMMT order will also follow the same rule as that of the normal buy and sell transaction.

11.1 Order Cancellation

11.1.1 In an occasion whereby a PO needs to cancel an order but their ATS is down, the said PO can submit a request to SMO of Bursa to cancel the said order. An order which is not matched will be cancelled by Bursa. For orders which are partially matched, POs must accept the trade as good.

11.1.2 All requests must be made using *Request to Cancel Orders form* and faxed and confirmed by the PO's authorised signatory. Please refer to *Appendix 8* for the sample form.

11.1.3 A PO under an emergency will be given only an option to do a '**Cancel all orders**' or '**Cancel orders by instrument**'. The Exchange will carry out this function as soon as possible upon receiving the instruction from the PO. The order cancellation will clear all outstanding orders in the PO's order book.

11.1.4 Procedures to Request for Order Cancellation

Similar to the requests for manual buying-in and DBTs, only the POs' authorised signatory are allowed to request for the orders to be cancelled.

<u>Responsibility</u>	<u>Action</u>
POs	<ol style="list-style-type: none"> 1. Send duly authorised <i>Request to Cancel Orders form</i> by fax. 2. The authorised signatory to contact SMO via phone to confirm the request has been received by SMO.
SMO personnel	<ol style="list-style-type: none"> 3. When POs call, verify the particulars in the request form. 4. Perform cancellation in the system.

11.2 Trade Cancellation Arising from System Malfunction or Procedural Error

- 11.2.1 This section outlines the policies and procedures to be undertaken in event of system malfunction or procedural error resulting in erroneous trades warranting cancellation.
- 11.2.2 Exchange will immediately send an alert to the market via a Special Announcement, informing of the event and the possibility that specified trade(s) may be erroneous.
- 11.2.3 In the event that the error trade is confirmed, the Exchange will broadcast another Special Announcement to the market informing them of the affected trades to be cancelled.
- 11.2.4 In addition to the Special Announcement, the designated personnel at the affected POs will be informed immediately with full details of the trade affected.
- 11.2.5 Similarly, if the event does not warrant any cancellation of trades, the Exchange will send a Special Announcement informing them of the decision.
- 11.2.6 If the event warrants immediate interruption of trading to ensure a fair and orderly market, the Exchange will immediately interrupt the entire market (or a specified stock or group of stocks) and inform all dealers through Special Announcement alerting them as follows:

“TRADE ERROR - Trading is interrupted due to error trades detected. The Exchange will inform market of the error trades to be cancelled and the resumption of the market (or a specified stock or group of stocks) once it is finalised. Thank you.”

- 11.2.7 During the interrupted phase, no trades will be executed. The interruption phase is to give traders the necessary time to contact their clients and to make modification to their orders, if necessary. This is also to enable the Exchange to determine the trades to be cancelled arising from the event.
- 11.2.8 The Exchange will inform the market through Special Announcement, at half an hour interval, on the status until full resumption of the entire market (or a specified stock or group of stocks).
- 11.2.9 Before resumption of market, the Exchange will disseminate to the market via , details of the trade to be cancelled e.g.

“TRADES TO BE CANCELLED – The following securities traded from 15:24:50 to 15:24:52 will be cancelled by the Exchange.”

- 11.2.10 All designated personnel at the affected POs will be informed immediately with full details of the trades affected. From the time such information is disseminated, there will be at least 20 minutes before trading resumes with the pre-opening phase.
- 11.2.11 Bursa will ensure that sufficient notice will be given to the market on resumption. The market will be alerted via Special Announcement at least 10 minutes before resumption. For example: *“Market will resume at 3.30 pm with a pre-opening phase for 10 minutes, to be followed by subsequent trading phases till the market closes for the trading at last.”*
- 11.2.12 Upon resumption, the entire market (or a specified stock or group of stocks) will open with a pre-opening phase and continue with the rest of the trading phases until market ends with the trading at last phase.

- 11.2.13 Depending on the circumstances of the case, the pre-opening will be set at least for 10 minutes to allow the dealers to modify their orders accordingly.

For example, on resumption the system will be set as follows:

Trading Phase	Time
Pre-opening phase	11.00 am to 11.30 noon (30 minutes)
Opening phase	11.30 am
Continuous phase	11.30 am to 12.30 pm (1 hour)

- 11.2.14 Bursa will ensure that on resumption, the entire market will be able to resume trading for at least half an hour, otherwise it will resume on the next trading session.
- 11.2.15 Bursa reserves the right to extend its trading hour to accommodate the resumption of trading if it is necessary to do so to ensure a fair and orderly market.

11.3 Trade Cancellation Arising from Mutual Cancellation

11.3.1 This section outlines the policies and procedures for mutual cancellation of trades between Participating Organisations (POs) due to:

- Error in price (within “non busting range”);
- Error in quantity;
- Wrong securities traded.

11.3.2 All trade cancellations are subject to final approval of the Exchange.

11.3.3 A levy of RM1,000 will be imposed on the requesting PO for any one approved cancellation.

11.3.4 All trade cancellations shall be effected only by the designated personnel at the PO.

11.3.5 The procedures at the PO’s end are as below:

(i) Requesting PO

- The designated personnel of the requesting PO is to notify the Securities Market Operations (SMO) staff by phone on an intended mutual cancellation of trade(s).
- The authorised signatory must then complete the *Mutual Cancellation - Error Trade Cancellation Request Form* and fax it immediately to the Head of SMO. Please refer to *Appendix 9* for as sample form.

(ii) Responding PO

- The designated personnel of the responding PO is to notify the SMO staff by phone, upon agreement with the requesting PO on a mutual cancellation.

- This must be followed immediately by the duly completed *Mutual Cancellation - Error Trade Cancellation Request Form* which has to be faxed to the Head of SMO.

11.3.6 Upon receipt of the forms from both the requesting and responding POs, SMO will:

- Issue a Special Announcement alerting the market of the request for cancellation of a specified trade;
- Decide on whether to allow the cancellation either partially or fully based on the details given in the form;
- Inform the authorised personnel of the requesting and responding POs and the market of the final decision.

11.4 Trade Cancellation Arising from Participants' Error

11.4.1 This policy covers price errors due to keying-in by participants which causes a trade to be executed at erroneous price substantially inconsistent with the prevailing market price during the Continuous Trading Phase.

11.4.2 The opening price and closing price as determined during the opening and closing auctions will be firm and no cancellation will be allowed.

11.4.3 The price error established by the Exchange covers two areas during the Continuous Trading Phase.

- A range of prices above and below the prevailing price within which erroneous trades will not be cancelled. This range is known as the “No Cancellation Range” (NCR).
- A range of prices above and below the prevailing price within which erroneous trades will be subjected to cancellation on the request by the participants within 15 minutes of the trade execution. This range is known as the “Qualifying Cancellation Range” (QCR).

11.4.4 The benefit of establishing and identifying such ranges in advance will provide market participants with certainty as to the price traded and provide consistency of treatment by the Exchange in handling erroneous trades.

11.4.5 The prevailing price is defined as:

- Last Done Price (Last Traded Price) prior to the execution of the erroneous trade on the current trading session.
- Best Buy Price or Best Sell Price offered prior to the execution of the erroneous trade on the current trading session.

- Exchange reserves the right to determine the prevailing price in the event if there is no last done price or best buy and sell price on the current trading session.

11.4.6 The following are the specified ranges identified to determine the NCR and the QCR based on the prevailing price immediately before the erroneous transaction of the securities:

PRICE OF SECURITIES	NCR (Lower Limit)	NCR (Upper Limit)	QCR (Lower Limit)	QCR (Upper Limit)
Below RM0.50	Within 7.5 sen from the prevailing market price	Within 7.5 sen from the prevailing market price	Below 7.5 sen from the prevailing market price	Above 7.5 sen from the prevailing market price
RM0.50 to RM1.00	Within 15.0 sen from the prevailing market price	Within 15.0 sen from the prevailing market price	Below 15.0 sen from the prevailing market price	Above 15.0 sen from the prevailing market price
Above RM1.00	Within 15% from the prevailing market price	Within 15% from the prevailing market price	Below 15% from the prevailing market price	Above 15% from the prevailing market price

- The prices executed under the NCR as specified above shall not be considered for cancellation.
- The prices executed under the QCR as specified above will only be cancelled at the request of dealer through designated personnel of the requesting PO provided that the request for cancellation is received by the Exchange within 15 minutes of the error trade execution. The Exchange will not automatically cancel a trade executed below or above the QER as there is a possibility that the price transacted is done between a willing buyer and seller in particular for illiquid

securities.

- 11.4.7 This policy is not applicable for Odd Lot Market and also for Direct Business Transaction.
- 11.4.8 The Exchange will grant a request for the trade to be cancelled only if a minimum trading loss of RM10, 000.00 is incurred. This is based on the difference between the value of the trade based on prevailing price against the value of the trade in error.
- 11.4.9 Notwithstanding any of the provisions to this rule, the Exchange maintains the right to take any action for the purpose of maintaining an orderly and fair stock market in consistent with Rule 201.1(2)(O) of the Bursa Securities Rules.
- 11.4.10 The following are the trade cancellation procedures:

(i) Policies

- All trade cancellations are subject to final approval of the Exchange. A levy of RM1, 000 will be imposed on the requesting PO for any one approved cancellation.
- Trade cancellation request shall be effected only by the designated personnel at the POs

(ii) Requesting PO

- The designated personnel of the requesting PO are to notify the Securities Market Operations (SMO), Bursa Malaysia Bhd staff by phone within 15 minutes of the error trade execution. Depending on the circumstances of the case the Exchange may use its discretion to extend the 15 minutes duration.
- He/She must then complete the *Participant Error - Error Trade Cancellation Request Form (Appendix 10)* and fax it immediately

to the Head of Securities Market Operations.

(iii) Securities Market Operations

Upon receipt of the *Participant Error - Error Trade Cancellation Request Form* from the requesting PO, the Exchange:-

- Issue a Special Announcement alerting the market of the request for cancellation of a specified trade;
- Decide on whether to allow the cancellation either partially or fully based on the details given in the *Participant Error - Error Trade Cancellation Request Form*;
- Inform the designated personnel of the requesting PO and the market on the final decision.

11.4.11 The Exchange will only entertain trade cancellation request from the PO's designated personnel. In order to facilitate order cancellation, PO may nominate up to 5 designated personnel for this purpose. Those POs who need to nominate more than 5 designated personnel may write to the Market Operations for consideration.

- Since trade cancellation request needs to be acted within 15 minutes, there should be several designated personnel being nominated so that in the absence of any one of them, the others can act for the POs;
- In respect to those POs with many branches, they can nominate more than 5 designated personnel;
- PO must inform the Exchange in writing immediately on the removal or addition of designated personnel.

11.4.12 Once the erroneous trades have been identified and approved for cancellation, the trades will be removed from the trading and clearing system.

11.4.13 Apart from the fine, Exchange reserves the right to take whatever appropriate action against the party to the erroneous trade.

11.4.14 All cancellation of the price error trades must be duly approved by the following Authorized Personnel from the Exchanges Operations prior to execution:

- Head, Exchanges Operations
- Chief Market Operations Officer

11.4.15 Onward Sales of the Erroneous Trade

- In the event that a dealer who immediately disposed off the trade to benefit from the error, the Exchange reserves its right to take other remedies to rectify the situation. This may include but not limited to, claiming the difference of the purchase price in error and the price disposed off by the party benefiting from the erroneous trade and returning the difference to the dealer who executed the error trade.
- Once a decision is made to claim the difference, the Exchange will inform the clearing house to make the necessary adjustment for payment.

11.4.16 Appeals

- When a PO is not satisfied with the cancellation, the PO may apply to the Exchange for a review of the cancelled contract on the same market.

11.5 Client Amendment during Intraday Disaster

- 11.5.1 In the current DR setup, only trade information residing in the NSC database is replicated to the DR site real-time, the rest of the information which resides in IA will only be replicated to DR site at the end of day.
- 11.5.2 Due to the above, if a disaster is declared during trading hours (intraday scenario), any client amendments performed prior to the disaster will not be able to be recovered at the DR site.
- 11.5.3 This will lead to settlement problems for trades which had client amendments for the trading hours prior to the disaster.
- 11.5.4 An interim solution has been developed to use CDS transfers for the Client Amendments in the above intraday scenario.
- 11.5.5 The workaround would be for the POs to transfer the share into the original client's account (i.e. prior to the amendment) in the event an intraday disaster occurs.
- 11.5.6 SMO Bursa will send a Special Announcement to inform market participants that all client amendments done before the disaster declared will not be recovered and request POs to e-mail all client amendments performed until the disaster to SMO via smo@bursamalaysia.com.
- 11.5.7 At the same time, SMO Bursa will invoke the emergency procedures using the "B5 Rectification of Error" approved reason of transfers.

11.5.8 Following this, POs should:

- a) Perform CDS transfers from the CDS account of the amended client to the CDS account of the original client on T+2 before 4.00pm (for sell transactions);
- b) Perform CDS transfers from the CDS account of the original client to the CDS account of the amended client on T+3 morning at 8.30am (for buy transactions);

11.5.9 Subsequently, POs must contact the Compliance Department of Intermediary Supervision of Regulation for approval of the transfers.

11.5.10 POs can also download the client amendment records from the WinSCORE for their reference. Please refer to *Appendix 10* for the procedures to download the records from WinSCORE.

12.1 General

12.1.1 This section outlines the procedures to suspend an instrument group or a few instrument groups or the entire market in the event of an emergency situation that is likely to severely and adversely affect the operation of the Exchange and/or POs which threatens the market from operating in a fair and orderly manner.

12.1.2 Such emergencies include but not limited to fire, computer malfunctions, system errors/program bugs, technical glitches or other hazard, power failure, communication or similar disruptive events affecting Bursa and/or the POs.

12.1.3 Disastrous incidents like the 11 September 2001 aerial attack on the World Trade Centre in New York resulted in the suspension of the Securities and Derivatives market in Bursa Malaysia Bhd.

12.2 FACTORS TO BE USED IN DECIDING THE CIRCUMSTANCES TO SUSPEND TRADING

12.2.1 Factors to suspend trading in the events of such eventualities affecting the Exchange and/or POs are as follows:-

- Entire Market – upon meeting any one of the following criteria
 - (i) 1/3 of POs are unable to trade;
 - (ii) The number of POs unable to trade constitutes 1/3 of the market trade volume based on the previous average market trade volume of the previous quarter.

- A Single or a Group of Instruments
 - (i) 1/3 of POs are unable to trade

- 12.2.2 In computing the number of POs not being able to trade, POs will be declared as unable to trade only when at least 50% of their branches are not able to operate. For this purpose, the main office is treated as a branch.

1. Enter Limit Order - Partially Executed

INITIAL ORDER BOOKS:

BUY ORDER BOOK				SELL ORDER BOOK			
#	Type	Price	Qty	#	Type	Price	Qty
001	LMT	7.0	20	003	LMT	9.0	5
002	LMT	6.0	10	004	LMT	9.5	10
				005	LMT	10.0	5

TRANSACTION ENTERED: Buy Limit Order #006 for price 9.5 and size 20

EXECUTED: Order #006 is executed with #003 at price 9.0, size 5
 Order #006 is executed with #004 at price 9.5, size 10

NOTE: Orders in the book match at the price limit. The incoming order will only match up to the price limit specified.

REMAINING ORDER BOOKS:

BUY ORDER BOOK				SELL ORDER BOOK			
#	Type	Price	Qty	#	Type	Price	Qty
006	LIM	9.5	5	005	LIM	10.0	5
001	LIM	7.0	20				
002	LIM	6.0	10				

2. Enter Limit Order - Fully Executed

INITIAL ORDER BOOKS:

BUY ORDER BOOK				SELL ORDER BOOK			
#	Type	Price	Qty	#	Type	Price	Qty
001	LMT	7.0	20	003	LMT	9.0	5
002	LMT	6.0	10	004	LMT	9.5	10

TRANSACTION ENTERED: Sell Limit Order #006 for price 6.0 and size 30

EXECUTED: Order #006 is executed with #001 at price 7.0, size 20
 Order #006 is executed with #002 at price 6.0, size 10

REMAINING ORDER BOOKS:

BUY ORDER BOOK				SELL ORDER BOOK			
#	Type	Price	Qty	#	Type	Price	Qty
				003	LMT	9.0	5
				004	LMT	9.5	10

1. Market Order Matching during Pre-Opening Phase

1.1 Pre-Opening - Matching orders are sufficient for the execution of Market Order

Initial TOP = 5.15

Previous day's settlement/reference price = 5.10

INITIAL ORDER BOOKS:

BUY ORDER BOOK				SELL ORDER BOOK			
#	Type	Price	Qty	#	Type	Price	Qty
001	MOO		45	005	MOO		66
002	MOO		60	006	LMT	5.10	42
003	LMT	5.15	32	007	LMT	5.15	35
004	LMT	5.15	19				

TRANSACTION ENTERED: Sell Market Order # 008 size 50

New TOP = 5.10

1.2 Pre-Opening - Matching orders are insufficient for the execution of Market Order

Initial TOP = 0.00

Previous day's settlement/reference price = 8.00

INITIAL ORDER BOOKS:

BUY ORDER BOOK				SELL ORDER BOOK			
#	Type	Price	Qty	#	Type	Price	Qty

TRANSACTION ENTERED: Sell Market Order # 001 size 50

New TOP = 0.00

During Opening securities will be in reserve state due to imbalance order.

2. Market Order Matching during Continuous Phase

2.1 Continuous Trading Phase

Last Done Price = 5.25

INITIAL ORDER BOOKS:

BUY ORDER BOOK				SELL ORDER BOOK			
#	Type	Price	Qty	#	Type	Price	Qty
003	MOO		45				
001	LMT	5.20	32				
002	LMT	5.15	19				

TRANSACTION ENTERED: Sell Market Order # 004 size 70

EXECUTED: Order #004 is executed with #003 at price 5.25, size 45
 Order #004 is executed with #001 at price 5.20, size 25

REMAINING ORDER BOOKS:

BUY ORDER BOOK				SELL ORDER BOOK			
#	Type	Price	Qty	#	Type	Price	Qty
002	LMT	5.20	7				
003	LMT	5.15	19				

Note: The Market Order takes priority over all other order types.

1. **Rule 1 - Maximize the number of quantity traded**

1.1 **Case 1**

BUY ORDER BOOK				SELL ORDER BOOK			
#	Type	Price	Qty	#	Type	Price	Qty
100	LMT	100	10	102	LMT	80	20
101	LMT	90	50	103	LMT	90	30

Theoretical Opening Price	Qty (Bid)	Qty (Sell)	Traded Qty	Unfilled Qty
100	10	50	10	40
90	60	50	50	10
80	60	20	20	40

The TOP is the price that maximizes the number of quantity to be traded = 90

1.2 **Case 2**

BUY ORDER BOOK				SELL ORDER BOOK			
#	Type	Price	Qty	#	Type	Price	Qty
100	LMT	100	50	103	LMT	80	50
101	LMT	90	50	104	LMT	90	50
102	LMT	80	50	105	LMT	100	50

Theoretical Opening Price	Qty (Bid)	Qty (Sell)	Traded Qty	Unfilled Qty
100	50	150	50	100
90	100	100	100	0
80	150	50	50	100

The TOP is the price that maximizes the number of quantity to be traded = 90

2. **Rule 2 - Minimize the number of quantity unfilled**

BUY ORDER BOOK				SELL ORDER BOOK			
#	Type	Price	Qty	#	Type	Price	Qty
100	LMT	100	50	103	LMT	80	50
101	LMT	90	10	104	LMT	100	40
102	LMT	80	20				

Theoretical Opening Price	Qty (Bid)	Qty (Sell)	Traded Qty	Unfilled Qty
100	50	90	50	40
90	60	50	50	10
80	80	50	50	30

The TOP is the price that minimizes the number of quantity unfilled = 90

3. Several prices are used to minimize the number of unfilled quantity

3.1 Case 1 (Rule 3i)

BUY ORDER BOOK				SELL ORDER BOOK			
#	Type	Price	Qty	#	Type	Price	Qty
100	LMT	100	40	102	LMT	80	40
101	LMT	90	10	103	LMT	100	20

Theoretical Opening Price	Qty (Bid)	Qty (Sell)	Traded Qty	Unfilled Qty	Side	Rule
100	40	60	40	20		
90	50	40	40	10	B	R1, R2,R3
80	50	40	40	10	B	

Prices 80 and 90 comply with Rule 2. At these two prices, the imbalance is on the buy side; the highest price is taken = 90

3.2 Case 2 (Rule 3ii)

BUY ORDER BOOK				SELL ORDER BOOK			
#	Type	Price	Qty	#	Type	Price	Qty
100	LMT	90	50	102	LMT	70	50
101	LMT	70	50	103	LMT	80	10

Theoretical Opening Price	Qty (Bid)	Qty (Sell)	Traded Qty	Unfilled Qty	Side	Rule
90	50	60	50	10	S	
80	50	60	50	10	S	R1, R2,R4
70	100	50	50	50		

Prices 80 and 90 comply with Rule 2. At these two prices, the imbalance is on the sell side; the lowest price is taken = 80

4. **Rule 5 - TOP price is closest to the reference price**

BUY ORDER BOOK				SELL ORDER BOOK			
#	Type	Price	Qty	#	Type	Price	Qty
100	LMT	100	20	102	LMT	70	20
101	LMT	80	10	103	LMT	90	10

Theoretical Price	Qty (Bid)	Qty (Sell)	Traded Qty	Unfilled Qty	Side
100	20	30	20	10	S
90	20	30	20	10	S
80	30	20	20	10	B
70	30	20	20	10	B

The TOP prices lies between the highest price showing an imbalance on the buy side i.e. price = 80; and the lowest price showing an imbalance on the sell side i.e. 90

The TOP used is the nearest value to the reference price i.e. settlement price, in between the price range of 80 and 90

5. TOP calculation with only market order in order book.

5.1 Case 1

BUY ORDER BOOK				SELL ORDER BOOK			
#	Type	Price	Qty	#	Type	Price	Qty
100	MO		20				

No TOP defined

5.2 Case 2

Previous Day's Reference price (settlement price) = 100

BUY ORDER BOOK				SELL ORDER BOOK			
#	Type	Price	Qty	#	Type	Price	Qty
100	MO		20	101	MO		20

The TOP is 100

Securities group/ Securities States	Description
Authorized	Order entry, modification, and cancellation are authorized <i>in general</i> for the securities. The opposite of authorized is forbidden. While a securities is authorized, it can also have a temporary state of open, reserved, or suspended. These states determine the activity permitted for the securities at the current moment.
Interrupted	Order entry, modification, and cancellation are permitted for the securities, however no matching will take place.
Forbidden	Order entry, modification, and cancellation are forbidden for the securities. When a securities is forbidden, it cannot open and cannot therefore be reserved.
Open	Order entry, modification, cancellation, and order matching are allowed for the securities, assuming the group state permits.
Reserved	<p>Order entry, modification, and cancellation are permitted for the securities, but order matching is denied (as when the securities is in the Pre-Opening phase). The securities is subject to Pre-Opening rules regardless of whether the group to which it belongs to is in the Pre-Opening, Opening or Continuous Trading phase.</p> <p>The current trading status for securities is changed to 'reserved' when the following occurs:</p> <ul style="list-style-type: none"> (i) automatically by the system when there are unfilled market orders at the opening/closing phase as a result of only partial matching of the market order or no matching having taken place at all; (ii) automatically by the system when there are unfilled market-on-opening/market-on-closing orders at the opening/closing phase respectively as a result of no matching having taken place at all.
Suspended	Order entry, modification, and cancellation are not permitted for the securities. Bursa Malaysia can manually suspend a securities because of corporate actions or other corporate news on the securities.

NORMAL AND ODD LOT MARKETS: TRADING HALT

NO.	TIME OF RELEASE OF MATERIAL ANNOUNCEMENT	TRADING HALT PERIOD	WINSORE SCREEN VIEW			FEATURES
			ORDER STATUS	SELL COLUMN	ORDER ENTRY	
1.	Before the commencement of trading at 9:00am	9:00am to 10:00am	Halt	-	-	<ul style="list-style-type: none"> Order entry and modification will be allowed Theoretical Opening Price (TOP) will be calculated.
2.	9:00am until 11:00am	1 hour from the time of trading halt	Halt	-	-	<ul style="list-style-type: none"> Order entry and modification will be allowed TOP will be calculated.
3.	11:01am and before 12:30pm	From the time of trading halt until 12:30pm	Halt	Forbid	“X” will be displayed	<ul style="list-style-type: none"> Order entry will be forbidden TOP will not be calculated during the trading halt
4.	12:30 pm to 1:30 pm	NO HALT	N/A	N/A	N/A	<ul style="list-style-type: none"> Release of announcements during this period will NOT impact trading.
5.	1:31pm until 2:30pm	2:30pm to 3:30pm	Halt	-	-	<ul style="list-style-type: none"> Order entry and modification will be allowed TOP will be calculated from 2:00 pm to 2:30 pm.

NORMAL AND ODD LOT MARKETS: TRADING HALT (CONT'D)

NO.	TIME OF RELEASE OF MATERIAL ANNOUNCEMENT	TRADING HALT PERIOD	WINSORE SCREEN VIEW			FEATURES
			ORDER STATUS	SELL COLUMN	ORDER ENTRY	
6.	2:31pm until 3:30pm	1 hour from the time of trading halt	Halt	-	-	<ul style="list-style-type: none"> Order entry and modification will be allowed TOP will be calculated.
7.	3:31pm and before 5:00pm	From the time of trading halt until 5:00pm	Halt	Forbid	“X” will be displayed	<ul style="list-style-type: none"> Order entry will be forbidden TOP will not be calculated during the trading halt

Note: The stock will be in reserve status for at least for 5 minutes before commencement of trading (e.g. if trading halt is from 10:00 am to 11:00 am, the status will change to reserve at 10:55 am and followed by opening at 11:00 am). The reserve status after trading halt indicates that the stock will open for trading by the next 5 minutes.

NORMAL AND ODD LOT MARKETS: TRADING SUSPENSION

NO.	TIME OF RELEASE OF MATERIAL ANNOUNCEMENT	TRADING HALT PERIOD	WINSORE SCREEN VIEW			FEATURES
			ORDER STATUS	SELL COLUMN	ORDER ENTRY	
1.	Anytime before, during or after trading	Prolonged suspension	Forbid	Forbid	“X” will be displayed	<ul style="list-style-type: none"> Order entry will be forbidden TOP will not be calculated during the trading halt

TRADING HALT: COMMENCEMENT OF DBTs

NO.	TIME OF RELEASE OF MATERIAL ANNOUNCEMENT	TRADING HALT PERIOD FOR NORMAL AND ODD LOT MARKET	WHEN DIRECT BUSINESS TRANSACTIONS CAN BE REPORTED UNDER RULE 902.2	VWAP TO BE USED TO DISCHARGE THE OBLIGATIONS UNDER RULE 903.1(4)
1.	Before the commencement of trading at 9.00am	9.00am to 10.00am	After 11.00am	VWAP of On-Market Trading (“OMT”) session from 10.00am to 11.00am
2.	9.00am until 10.30am	1 hour from the time of trading halt	1 hour after OMT session commences	VWAP of 1 hour OMT session
3.	10.31am until 11.00am	1 hour from the time of trading halt	} After 3.30pm	} VWAP of OMT session from 2.30pm to 3.30pm
4.	11:01am and before 12.30 pm	From the time of trading halt until 12.30 pm		
5.	12.30pm until 1.30pm	No trading halt will be imposed for normal /odd lot markets, but DBT will be forbidden		
6.	1.31pm until 2.30pm	2.30pm to 3.30pm	After 4.30pm	VWAP of OMT session from 3.30pm to 4.30pm

TRADING HALT: COMMENCEMENT OF DBTs (CONT'D)

NO.	TIME OF RELEASE OF MATERIAL ANNOUNCEMENT	TRADING HALT PERIOD FOR NORMAL AND ODD LOT MARKET	WHEN DIRECT BUSINESS TRANSACTIONS CAN BE REPORTED UNDER RULE 902.2	VWAP TO BE USED TO DISCHARGE THE OBLIGATIONS UNDER RULE 903.1(4)
7.	2:31pm until 3.00pm	1 hour from the time of trading halt	1 hour after OMT session commences	VWAP 1 hour OMT session
8.	3.01pm until 3.30pm	1 hour from the time of trading halt	} Next market day 1 hour after OMT session commences	} Next market day VWAP of OMT session from 9.00am to 10.00am
9.	3.31pm and before 5.00pm	From the time of trading halt until 5.00pm		

Stock Code:

VWAP Price:

Transaction price per unit:

Transaction date:

Buying broker	Dealer ID*	Dealer Code	Buying Client	Client ID*	CDS Account Number	Quantity of securities (units)	Selling Broker	Dealer ID*	Dealer Code	Selling Client	Client ID*	CDS Account Number	Quantity of securities (units)
					Total Buying							Total Selling	

Please fax the form to 03-2026 3660 and call SMO at 03-2034 7777.

Prepared By : (Authorised Signatory)

Date :

Reason for the transaction:-

ORDER CANCELLATION REQUEST ON <DATE>

I, _____ PO's Name & Branch _____, Broker Code: _____ hereby
authorized Bursa Malaysia to cancel the following:

All unmatched orders in the order book

All orders for the following stock:

Stock name: _____

Stock code: _____

Attached is the list of orders for your reference.

AUTHORISED BY: _____
(AUTHORISED SIGNATURE)

NAME OF CONTACT PERSON: _____
(AUTHORISED PERSON)
<DESIGNATION>

CONTACT NO.: _____

Please fax the form to 03-2026 3660 and call SMO at 03-2034 7777.

MUTUAL CANCELLATION - ERROR TRADE CANCELLATION REQUEST FORM

REQUESTING PO :

DATE REQUEST:

BROKER CODE :

Please be advised that we would like to cancel our trade done on << date >>. Details of the said request are as follows:

STOCK NAME	STOCK CODE	QUANTITY	TRS NO.	REASON FOR CANCELLATION

Please fax the form to 03-2026 3660 and call SMO at 03-2034 7777.

REQUESTED BY : _____
(AUTHORISED SIGNATORY)

NAME : _____
(DESIGNATION)

CONTACT NO. : _____

MUTUAL CANCELLATION - ERROR TRADE CANCELLATION REQUEST FORM

RESPONDING PO :

DATE REQUEST:

BROKER CODE :

Please be advised that we would like to cancel our trade done on << date >>. Details of the said request are as follows:

STOCK NAME	STOCK CODE	QUANTITY	TRS NO.	REASON FOR CANCELLATION

Please fax the form to 03-2026 3660 and call SMO at 03-2034 7777.

REQUESTED BY : _____
(AUTHORISED SIGNATORY)

NAME : _____
(DESIGNATION)

CONTACT NO. : _____

PARTICIPANT ERROR - ERROR TRADE CANCELLATION REQUEST FORM

REQUESTING PO: _____ : DATE REQUEST: _____

BROKER CODE : _____

Please be advised that we would like to cancel our trade done on << date >>. Details of the said request are as follows:

STOCK CODE	STOCK NAME	ORDER ENTRY TIME	MATCHED TIME	TRS NO.	QUANTITY	PRICE	VALUE

Please fax the form to 03-2026 3660 and call SMO at 03-2034 7777.

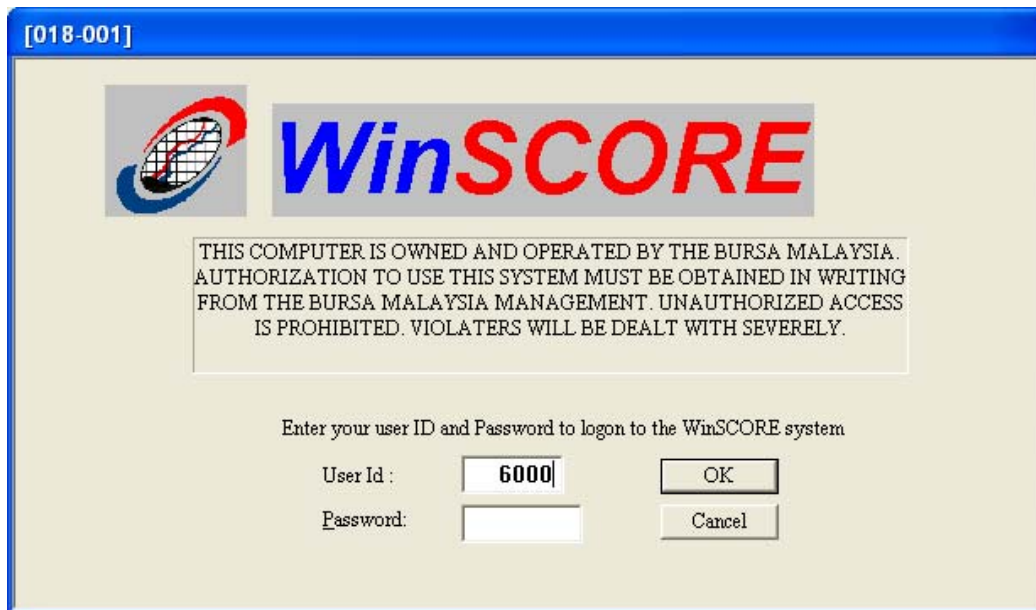
Reason: _____

REQUESTED BY : _____
(AUTHORISED SIGNATORY)

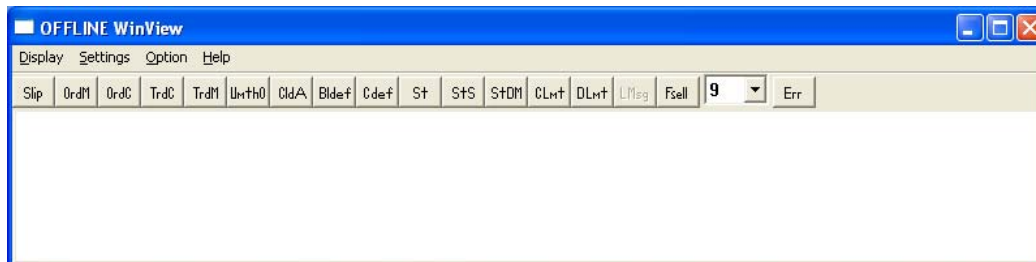
NAME : _____
(DESIGNATION)

CONTACT NO. : _____

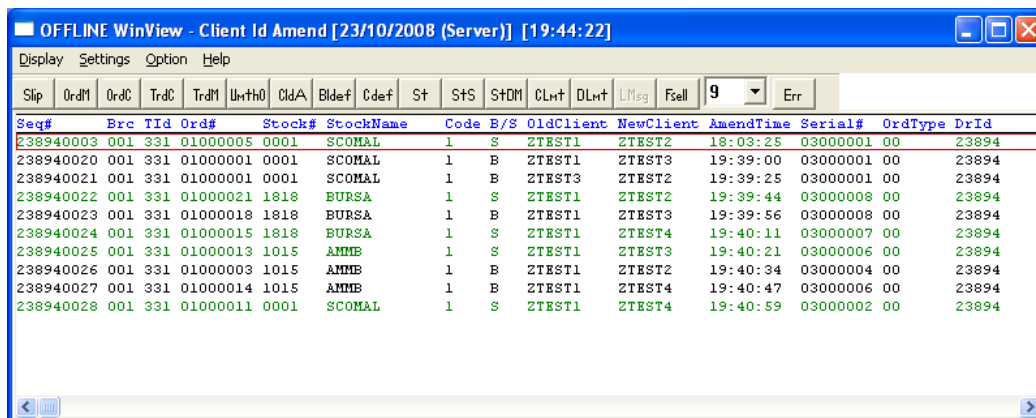
1. Logon as Financial Controller (to print the full report for Branch)



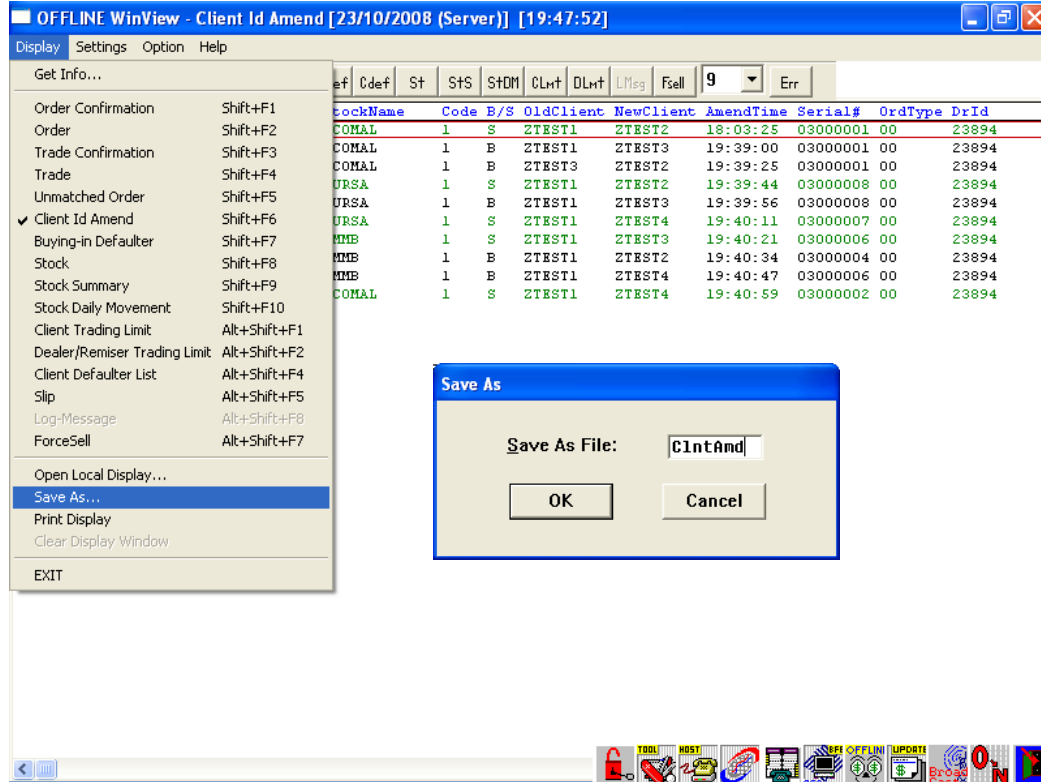
2. Launch WinView Offline



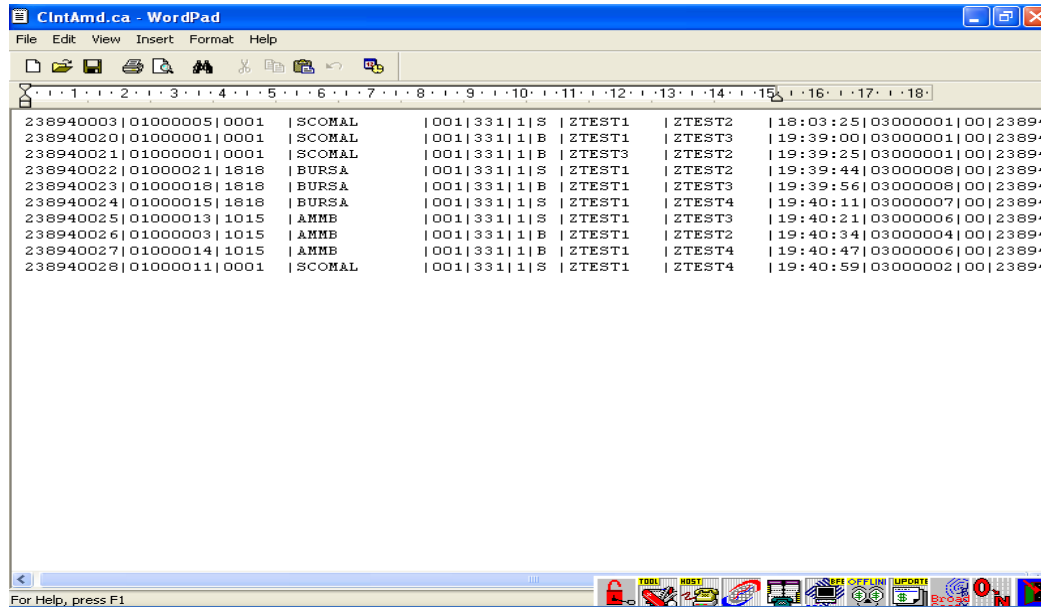
3. Click at 'CIdA' button to display all client amendments done by all users



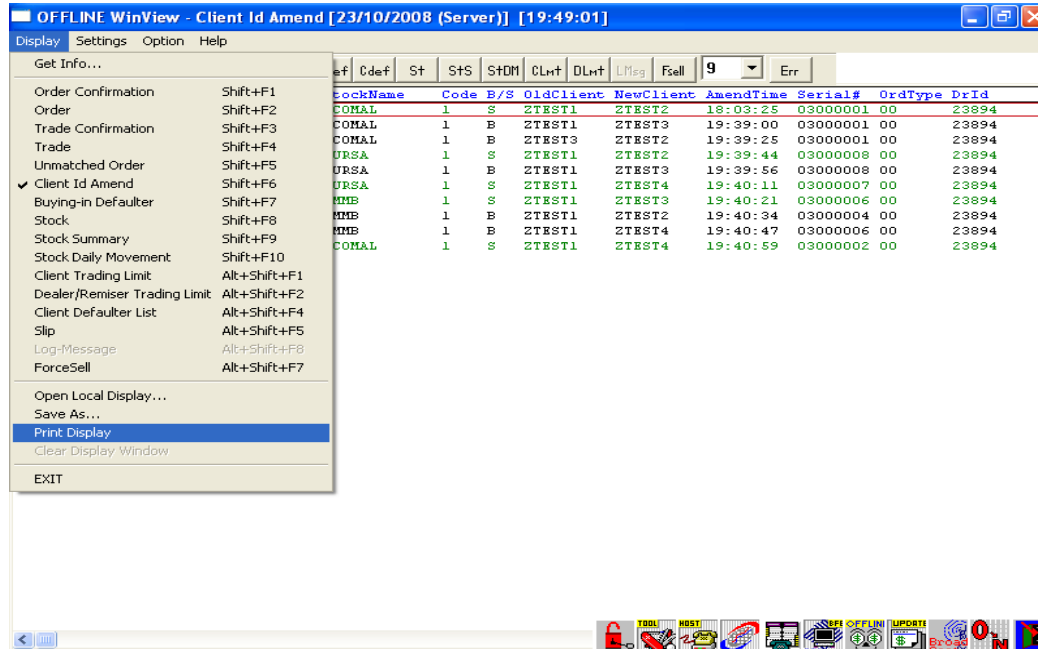
4. Save the file.



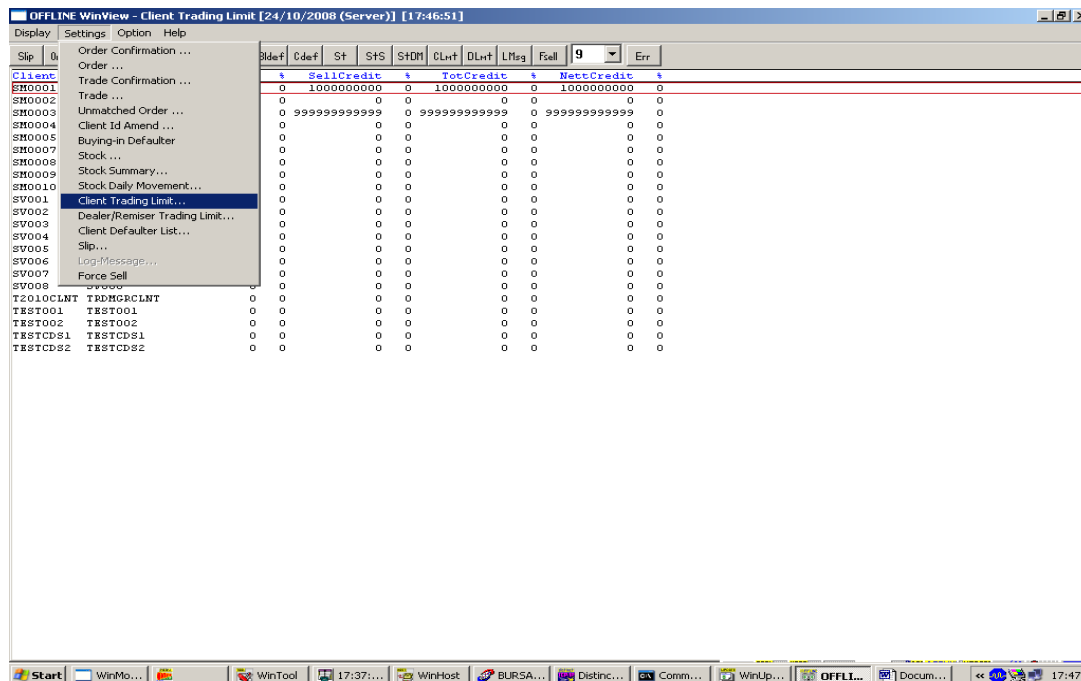
The file will be saved at c:/bfe/WINVIEW/DAT/ (filename ClntAmd.ca)



5. Print the display to a printer

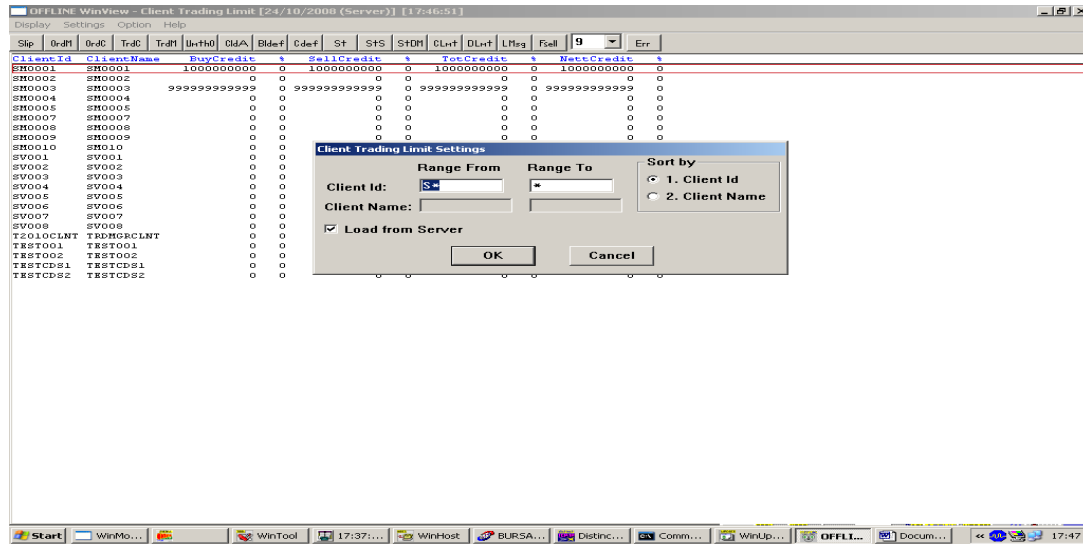


6. Note that the above report only displays the Client ID and not the CDS A/C number. To get the CDS account for the Client - Go to **Setting; Client Trading Limit**

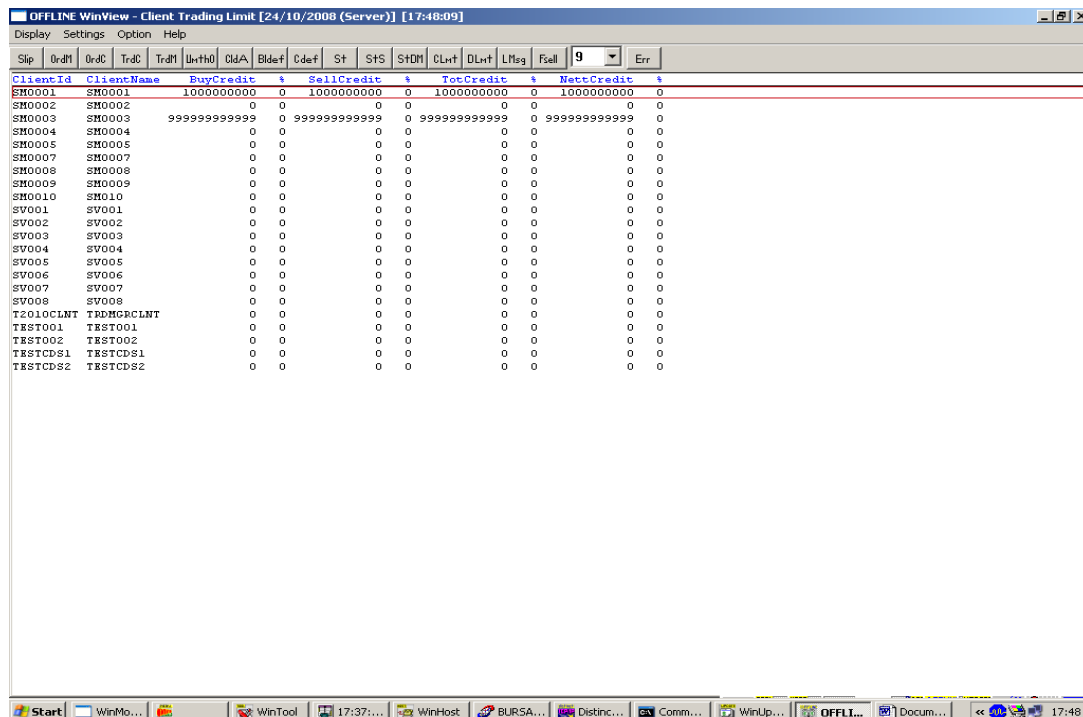


7. The Client details can be printed individually , or in range, or all (if the number is not too high)

Key in the range of client ID to extract clients ids in the range.



The resulting list of Client Ids with their CDS A/C numbers.



To print the list :-

